

SWM Wilson, NC facility has a total of 58 employees with projections to staff up to 75.



Featured Filtration Materials Solutions

SWM is known for its diverse portfolio in highly engineered media such as [Alphastar™ Electrostatic Media](#) and [Delpore™ Meltblown](#) & [Thermal Bond Media](#). Our North Carolina-made nonwoven filter media is used in respirators, aircraft cabin air filters and building HVAC air filters, helping to clean and purify the air we breathe. Bacteria, pollen and dust can all affect the way we breathe, so it's important that the air filter media we use minimizes the impact of these harmful toxins.

SWM Filtration Applications Include:

- Filter media & membrane backing paper
- Cores, cages & center tubes
- Pleat support & screening layers
- Feed spacers, cartridge sleeving & drainage layers



Funding Request Overview

Highlights of the SWM Proposal for development of an additional Alphastar Media line in Wilson, NC:

- SWM is proud to be manufacturing products that help combat the COVID-19 pandemic.
 - In particular, our air filtration media products manufactured out of our Wilson, NC facility are used in ventilation systems (HVAC), hospital pre-filters, and other various medical applications, such as continuous positive airway pressure (CPAP) units, ventilators and respirators.
- We are one of the few suppliers of high quality material of this type in the USA, specifically Merv 13 rated media.
- SWM is nearing its capacity and the increased global demand simply will not be met by our industry at current production levels.
 - Even though we have increased our capacity by 40%, the demand is 180% over the upgraded capacity.

- Based on the January 2021 Executive Order on a Sustainable Public Health Supply Chain, we believe that investing in additional filtration media capacity is an ideal project for the Defense Production Act (DPA).
- We at SWM can better serve our country's needs if we secure an additional Alphastar Media line.
- A \$5.5 million investment in Wilson, NC (which includes the purchase of machinery mostly from U.S. suppliers), would increase our capacity by close to 60% and also create 12-15 new American jobs with good pay and benefits.



SWM Markets Served

SWM Markets

We serve a range of markets with our highly engineered products, such as:

- Agriculture
- Consumer goods
- Energy
- Erosion control
- Filtration
- Food & beverage
- Home
- Infrastructure
- Industrial
- Medical
- Packaging
- Tobacco
- Transportation



SWM - Our History



Present Day: With an expanded portfolio of fiber and resin-based products, SWM is a world-wide leader in advanced materials across a range of industries.

2017 - Acquisitions: SWM acquired Scapa in 2021, Tekra in 2020 and Conwed Plastics in 2017 increasing its product capabilities and market reach into Infrastructure and Consumer applications.

2013 - Diversification: SWM established and grew its Advanced Materials & Structures (AMS) platform specializing in market-leading Filtration and Transportation applications with the acquisitions of Argotec and Delstar.

1996 - Global Expansion: SWM focused on expanding its paper operations around the world with key acquisitions and sale office openings in Europe and Asia.

1995 - New Beginning: SWM announced it would become an independent public company after a spin-off from Kimberly-Clark Corporation.

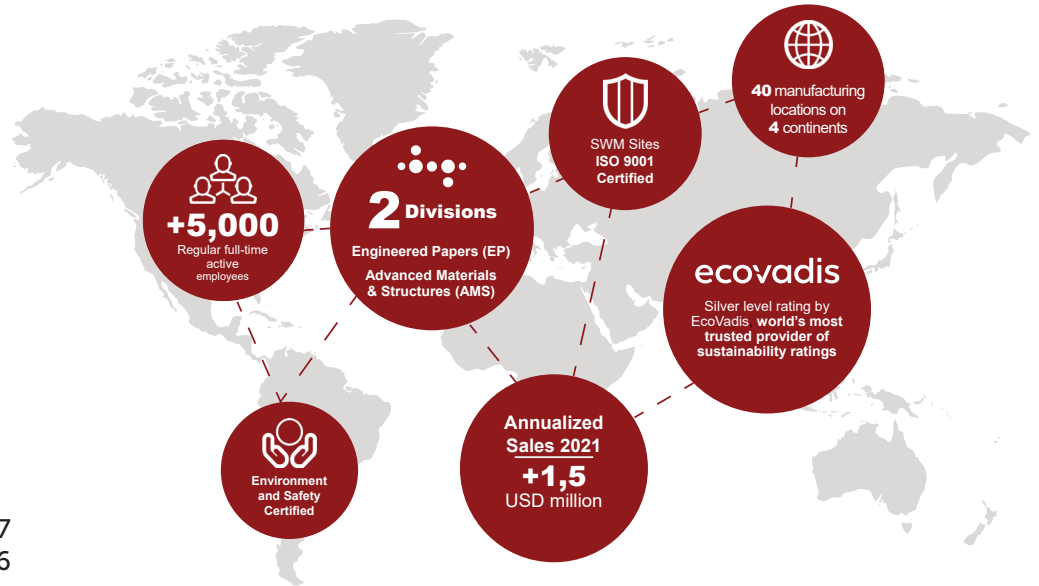
1994 - Foundations of Success: Operations focused on fine writing papers and specialty papers for the tobacco market.

1545 - Origins in France: Schweitzer-Mauduit International's first paper mill (Papeteries de Malaucene) began operations in the south of France.

SWM in Brief

As experts in highly engineered Advanced Materials and Structures made from resins and polymers, we provide solutions to make products stronger, more durable and with increased performance. We pride ourselves in our ability to offer unmatched products and services to demanding industries. For more than 70 years, SWM has served its customers through a wide global manufacturing network with diverse processing capabilities developing solutions tailored to meet our customers unique requirements.

- USA manufacturing sites: 17
- USA employees: 2,006

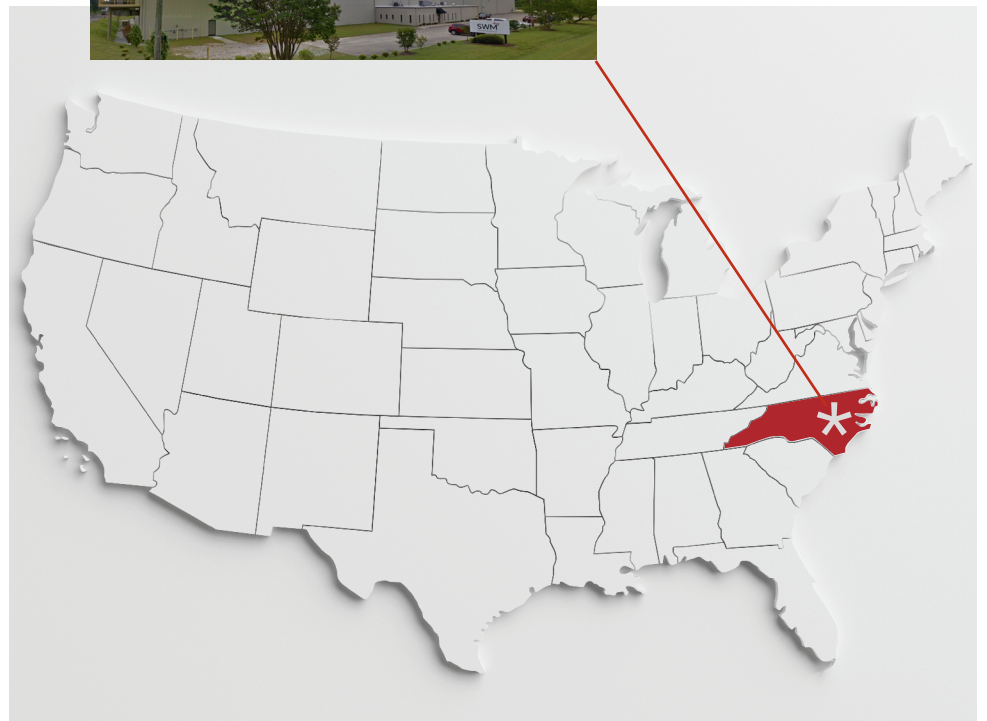


SWM AMS Facilities & Locations

SWM is focused on advancing advanced materials and technologies in our ISO 9001, ISO 14001, ISO 50001 and OHSAS 18001 certified facilities. Our diverse product lines are recognized worldwide for their superior performance in a variety of applications.

Americas:

- Athens, Georgia
- Austin, Texas
- Chicago, Illinois
- El Cajon, California
- Greenfield, Massachusetts
- Middletown, Delaware
- Minneapolis, Minnesota
- New Berlin, Wisconsin
- Newberry, South Carolina
- Pirai, Brazil
- Richland, Pennsylvania
- Roanoke, Virginia
- Spotswood, New Jersey
- **Wilson, North Carolina**
- Winkler, Canada
- Woodville, Wisconsin



Europe:

- Genk, Belgium
- Gilberdyke, England
- Hamburg, Germany
- Le Mans, France
- Strykow, Poland
- Luxembourg, Luxembourg
- Moscow, Russia
- Quimperle, France
- Saint-Girons, France

Asia:

- Hong Kong, China
- Jiangmen, Guangdong Province, China (JV)
- Shanghai, China
- Suzhou Jiangsu, China
- Yuxi, Yunnan Province, China (JV)

ams@swmintl.com
swmintl.com

100 North Point Center East, Suite 600, Alpharetta, GA 30022 USA
Call: 800-521-6713 or 770-569-4200