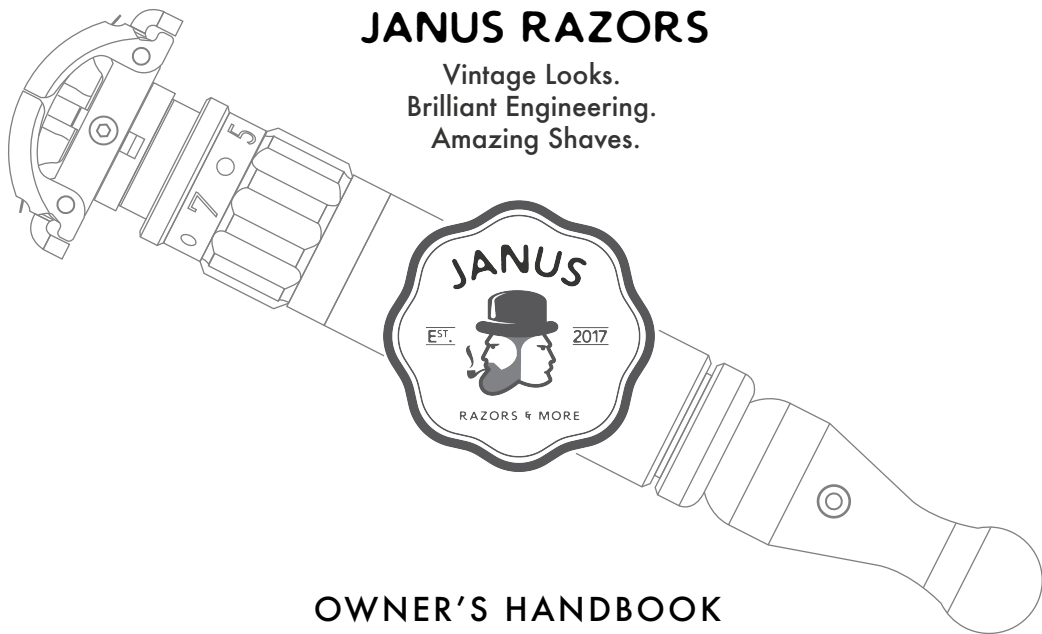


JANUS RAZORS

Vintage Looks.
Brilliant Engineering.
Amazing Shaves.



OWNER'S HANDBOOK

Certificate of Authenticity



JANUS RAZORS

Model

Serial Number

Date of Purchase

Checked

JANUS RAZORS LLC

CONTACT JANUS



eric@janusrazors.com



www.janusrazors.com



@JanusRazors

WELCOME

Thanks for your support, and trust by becoming the owner of a Janus Adjustable Toggle Razor.

Your razor was expertly designed, brilliantly engineered, and proudly crafted in Minnesota. This new rendition of traditional wet-shaving builds upon yesterday's expertise, timeless values such as empathy, design for delightful intuitive use, crafting using premium materials, and pride in ownership.

The Janus Adjustable Toggle Razor is a 100% 316 Stainless Steel mechanical complication of 35 components solely sourced in the US. Even the light compression springs are made of 316 Stainless Steel! With the right care and attention, your razor is made to last for you and future generations to enjoy and admire.

Please invest a little time in reading this handbook. It has been designed to help you maximize the use, and enjoyment of your new razor.

Cheers!

Eric Nyaribo, P.E.
Founder, JANUS RAZORS LLC



HISTORY

For me, shaving is therapeutic. A relaxing escape from the daily flow of obligations and expectations. However, it didn't start that way. Shaving wasn't always an indulgence. For long, it was a tedious chore.

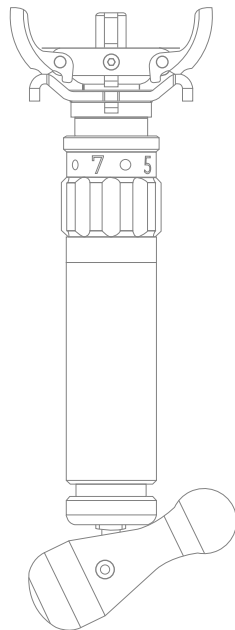
Then I discovered traditional wet-shaving using double-edge safety razors; complemented by occasional straight razor shaves from a Master Barber.

I tried countless razors during my quest for amazing shaves. I was especially drawn to the Gillette Toggle; mesmerized by its eccentric mechanisms, its timeless elegance, and the honest 50s design devoid of embellishments and well ahead of its time.

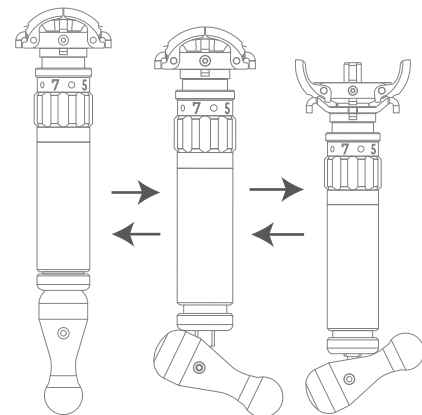
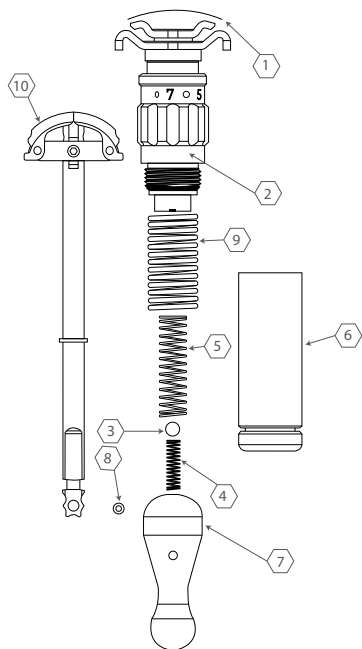
Even though I enjoyed using the Gillette Toggle, I always wondered about a modern refresh of this iconic and highly sought-after razor with the pesky bits fixed, and the best kept intact or refined.

What is possible with fresh design perspectives anchored in premium materials, and advancements in computer aided design and engineering and modern manufacturing? The only way to find out was to do it. The goal was to create a razor that is a joy to own, but most important, delightful to use.

Happy Shaving!



COMPONENTS



Closed position;
ready for shaving

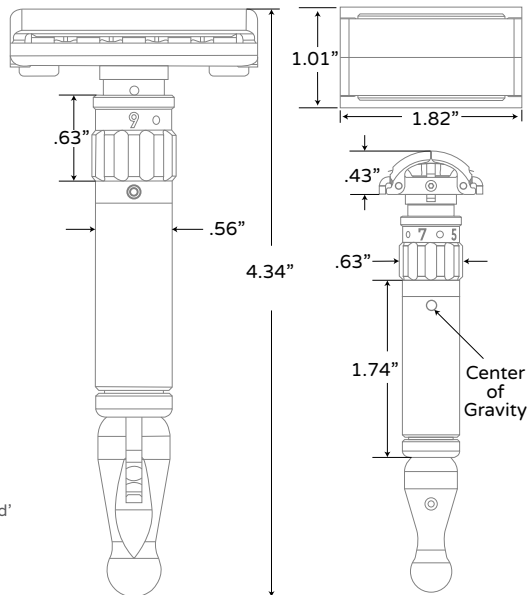
Flick the toggle
knob half-way
to activate the
rinsing position

Fully flick the
toggle knob to
instantly open the
razor for blade
loading or
replacement

- 1 Blade (closed position)
- 2 Razor Head
- 3 Toggle Detent Ball
- 4 Toggle Detent Spring
- 5 Spider Spring
- 6 Handle
- 7 Toggle Knob
- 8 Toggle Knob Set Screw
- 9 Seat Spring
- 10 Spider (closed position)

TECHNICAL SPECIFICATIONS

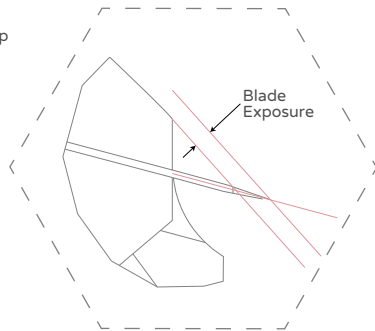
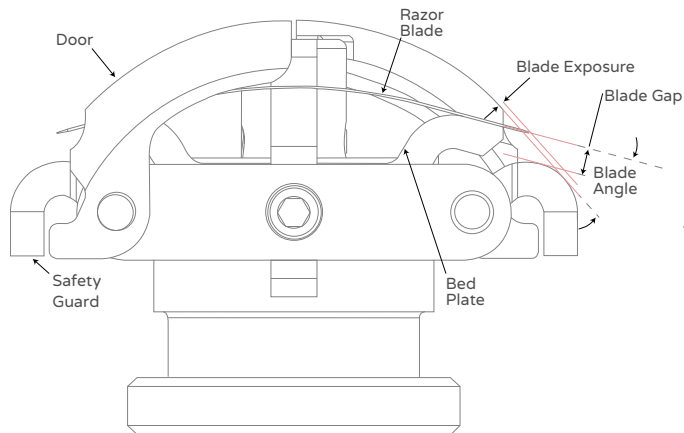
- 100% 316 Stainless Steel
- 100% Designed and Manufactured in Minnesota
- 35 Components; all components are sourced in the US
- Weight: 122g
- Laser marked settings for crisp and permanent legibility
- 9 settings for Blade Exposure
- Lubrication Port
- Uses standard double-edge razor blades
- Individual Serialization for traceability
- Available in Passivated and PVD Coated ('Black Gold', 'Yellow Gold' & 'White Gold') options



PERSONALIZE FOR AMAZING SHAVES

Personalize your shave by turning the adjustment dial knob.

Indexed rotation of the adjustment dial knob moves the safety guard up or down in fixed increments. This up or down movement changes the Blade Angle and Blade Gap to ultimately vary Blade Exposure – how close the blade edge gets to your skin.

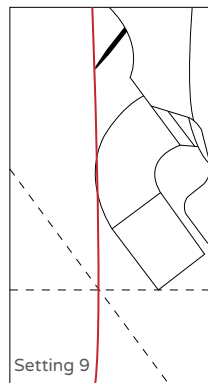
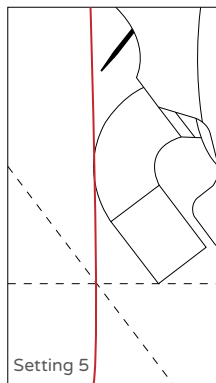
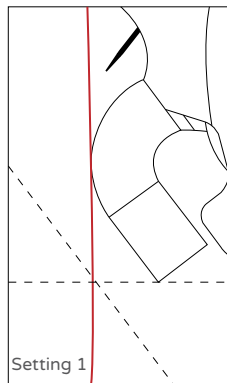


PERSONALIZE FOR AMAZING SHAVES

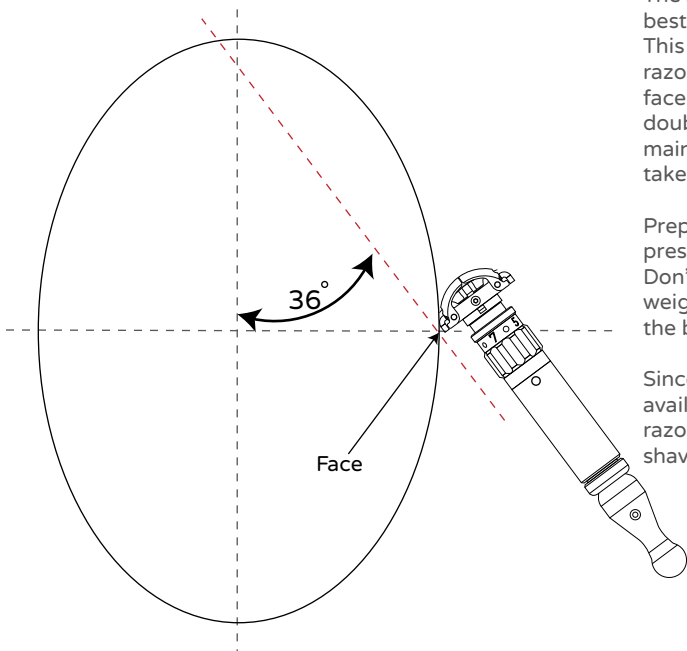
Each selected setting, locked in place by a mechanical detent in the adjustment dial knob, has a specific Blade Exposure. There are 9 settings to choose from; to accommodate uniqueness in skin sensitivity, hair coarseness, shaving skill, stubble length, and amount of time available to shave.

New to traditional wet-shaving using safety razors, or transitioning from cartridge razors, or have areas with sensitive skin? First experiment with Settings 1-3. These settings offer the most forgiveness because of the low blade exposure. And then explore and discover your sweet spot(s).

SETTING/PARAMETERS	1	2	3	4	5	6	7	8	9
BLADE EXPOSURE (INCHES)	0.002	0.003	0.004	0.005	0.006	0.007	0.008	0.009	0.010



TECHNIQUE



The Janus Adjustable Toggle Razor works best when held at $\sim 33^{\circ}$ - 39° to the skin. This angle lets you comfortably work the razor over the changing contours of your face. If you are new to wet-shaving using double-edge safety razors, finding and maintaining this angle during a shave will take some practice.

Prep your skin well, maintain light pressure, and shave with/along the grain. Don't press hard for results. Let the weight of the razor, and the sharpness of the blade do the work.

Since the Janus Razor uses readily available and affordable double-edge razor blades, replace the blade after ~ 2 - 3 shaves.

MAINTENANCE

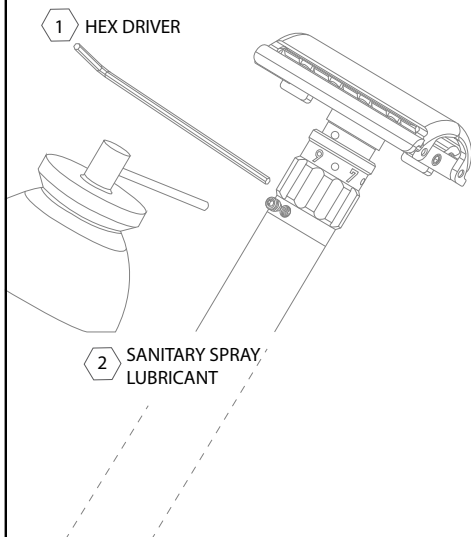
The Janus Adjustable Toggle Razor comprises of 35 tight-toleranced components interacting with each other to enable the different mechanisms.

Perform the following maintenance procedure at least once a year, or as necessary. Using a .050" hex driver, carefully remove the hex set screw from the fitting underneath the adjustment dial knob.

Point the spray can plastic tip into the set screw port, and then push the trigger once or twice. Only use a sanitary spray lubricant such as Zep that is odorless, tasteless, colorless, and does not contain any unsaturated, aromatic or silicone compounds. The lubricant leaves a film which has excellent lubricating properties and water repellency. Alternatively, you can use one or two drops of mineral oil.

When screwing back the set screw, use caution not to over-tighten as this may strip the threads on the fitting underneath the adjustment dial knob.

ALWAYS thoroughly rinse your Janus Adjustable Toggle Razor after every use. After use, do not leave the blade in the razor. Occasional rust from the blades could stain your Janus Adjustable Toggle Razor.



IMPORTANT NOTICE



eric@janusrazors.com



www.janusrazors.com



@JanusRazors



Janus Razors LLC declines all responsibility and cannot be held liable for any injuries such as nicks and cuts you might sustain when shaving or handling the Janus Adjustable Toggle Razor. Injuries such as cuts are not considered to be from manufacturing defects.

Janus Razors has a 30/60 Guarantee. Janus Razors offers a 30-day return policy for a full refund or replacement so long as the razor is in new undamaged condition. Janus Razors guarantees its razors against manufacturing defects for 60 months from the date of purchase. This warranty excludes wear and tear from reasonable use, and damage from careless handling. Visit our website for more details about our 30/60 Guarantee.

Janus Razors LLC reserves the right to modify models or product features at any time, and without prior notice. All images in this Owner's Handbook are computer generated from 3D CAD models.



Vintage Looks.
Brilliant Engineering.
Amazing Shaves.